

STUBIŠTE 3

					S512
					5. kat
					02-S87

STAN TIP J1

4 SOBNI

1	hodnik	parket		14,32
2	wc	ker.pl.		3,23
3	kupaonica	ker.pl.		4,47
4	kupaonica	ker.pl.		4,20
5	kuhinja	ker.pl.		7,43
6	boravak+blagovaonica	parket		45,05
7	soba	parket		10,60
8	soba	parket		12,87
9	soba	parket		12,06

UKUPNA ZATVORENA NKP STANA

114,23

10	balkon - 50%	ker.pl.	(7,03)	3,51
----	--------------	---------	--------	------

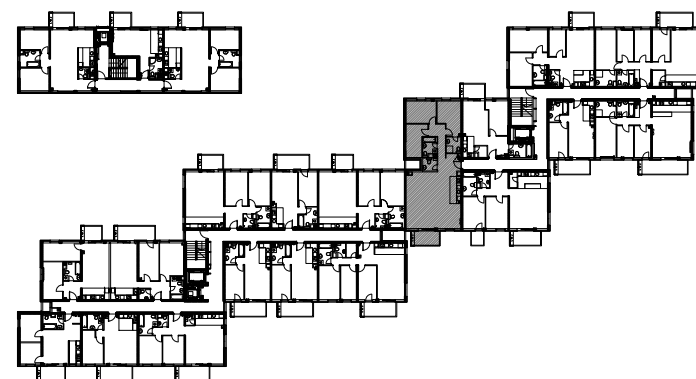
UKUPNA NKP STANA

117,74

11	•] i ^ { ž c Å Ā Ć	protupr.premaz	(2,44)	1,22
----	---------------------	----------------	--------	------

SVEUKUPNA NKP

118,96



M 1:150